

November



For Members

Philadelphia
Museum of
Art

This Month

Dorrance Galleries

Little Ladies: Victorian Fashion Dolls and the Feminine Ideal

November 11, 2018–March 3, 2019
Members' Previews: November 9 & 10

Before Barbie and American Girl, there was Miss Fanchon. The ultimate toy for privileged girls in the 1860s and 1870s, she and her friends were seen as models of ladylike perfection. These dolls came with an amazing array of dresses, undergarments, and meticulously crafted accessories, from gloves and jewelry to roller skates and calling cards. Bring the kids—or just your love of all things miniature—and marvel at these tiny Victorian treasures.



Dorrance Galleries

Fabulous Fashion: From Dior's New Look to Now

Through March 3, 2019

Experience the drama and glamour of some of the most creative feminine fashions ever designed, from romantic ball gowns to audacious contemporary ensembles, and everything in between. See how designers have used color and pattern, shape and volume, draping, metallics, and embellishments to continually reinvent the art form. The pieces in the exhibition—daywear, bridal wear, and more—showcase the Museum's outstanding costume collection. Many are on view for the first time.



Our Halls Are Decked

Holidays at the Museum

Make the Museum a part of your holiday tradition. We're ushering in this cheerful season with Member Appreciation Days and lively events, all free for members.

Tree Lighting Celebration

Wednesday, November 21, 5:00–7:00 p.m.

Music and festive treats lead up to the 6:00 p.m. countdown on the East Terrace. Then we continue the celebration inside with warm (and adult) beverages, a live choir, evening hours, and Pay What You Wish admission for your guests.

Member Appreciation Days

Friday, November 30–Sunday, December 2

Thank you for being a part of our family. We're showing our gratitude by inviting you to visit the Museum during these special days. Enjoy extra perks, just for you, like drip coffee and tea on us, and 20% off at the Museum Store and all retail locations.

And join us for these festive events:

Final Friday: The Ultimate Ugly Sweater Party

November 30

Holiday Marketplace (20% off)

December 1



November



In the Galleries

African American Artists of the Great Migration
Fernberger Family Gallery 108

1 Thursday

11:00 **Spotlight Conversation**
4:00–9:00 **Craft Show Preview Party** (at Pennsylvania Convention Center) \$ **R**

2 Friday

11:00 **Spotlight Conversation**
11:00–9:00 **Craft Show** (at Pennsylvania Convention Center) \$
5:00–8:45 **Friday Nights** Josh Lawrence

3 Saturday

10:00–6:00 **Craft Show** (at Pennsylvania Convention Center) \$
11:00 **Spotlight Conversation**
9:00–12:00 **Fall into Art** \$ **R**

4 Sunday

Pay What You Wish
10:00–3:00 **Family Festival** Dazzling Diwali
10:00–5:00 **Craft Show** (at Pennsylvania Convention Center) \$
2:30 **Community Conversation** Memory

6 Tuesday

6:00 **Arcadia Library Lecture** P.S. Page Me Later: The Magic and Mystery of FOUND Stuff **R**

7 Wednesday

10:15 **Members-Only Tour** South Asian Art **R M**
6:00 **Associate Sponsor Members** Behind the Scenes: Frames Conservation (\$5,000+) **M**

8 Thursday

10:15 **Members-Only Tour** *Fabulous Fashion* **R M**
11:00 **Spotlight Conversation**

9 Friday

Members' Previews Little Ladies
11:00 **Spotlight Conversation**
2:15 **Members-Only Tour** South Asian Art **R M**
5:00–8:45 **Friday Nights** Lowland Hum

10 Saturday

Members' Previews Little Ladies
11:00 **Spotlight Conversation**
2:15 **Members-Only Tour** *Fabulous Fashion* **R M** **Sold Out**
2:30 **Collect Members** How to Care for a Collection **R M**

11 Sunday

10:30–3:00 **Families** Outside the Lines

13 Tuesday

10:15 **Members-Only Tour** *Fabulous Fashion* **R M**
6:30 **What Is Citizenship?** **R**

14 Wednesday

11:00 **Families** Stroller Tours
5:30 **Collab Members** Student Design Competition Tour **R**
6:00 **Workshop** Fashionable Headwear \$ **R**
6:15 **Members-Only Tour** South Asian Art **R M**

15 Thursday

8:00 **Associate Members** Breakfast Tours: *Fabulous Fashion* (\$2,500+) **M**
11:00 **Circle Members** Presenting *Fabulous Fashion* (\$500+) **R M**
11:00 **Spotlight Conversation**

16 Friday

11:00 **Spotlight Conversation**
2:15 **Members-Only Tour** *Fabulous Fashion* **R M** **Sold Out**
5:00–8:45 **Friday Nights** Darryl Yokley

17 Saturday

11:00 **Spotlight Conversation**
6:00 **Collab Design Excellence Award** Dieter Rams \$ **R**

18 Sunday

10:30–3:00 **Families** Outside the Lines

21 Wednesday

5:00–7:00 **Tree Lighting Celebration**

22 Thursday

The Museum is closed for Thanksgiving

23 Friday

10:30–3:00 **Families** Turkey Hangover
5:00–8:45 **Friday Nights** Tony Miceli Quartet featuring Larry McKenna

24 Saturday

10:30–3:00 **Families** Turkey Hangover

25 Sunday

10:30–3:00 **Families** Turkey Hangover

30 Friday

Member Appreciation Days begin
11:00 **Spotlight Conversation**
5:00–8:45 **Final Fridays** The Ultimate Ugly Sweater Party



Hours

Main Building
10:00 a.m.–5:00 p.m., Wednesdays and Fridays until 8:45. Closed Mondays.

Perelman Building
10:00 a.m.–5:00 p.m. Closed Mondays.

Rodin Museum
10:00 a.m.–5:00 p.m. Closed Tuesdays.

Cedar Grove
Open through December.
Closed November 15–18 due to Philadelphia Marathon.
Thursday–Sunday: guided public tours at 11:00 a.m., 1:00 p.m. & 2:30 p.m.

First Sunday of each month: tours 10:00 a.m.–4:00 p.m.

Mount Pleasant
Closed for maintenance.

We're Here to Help
memberservices@philamuseum.org
215-684-7840

For more information or to make a reservation, contact us at 215-235-7469 or visit philamuseum.org.

Member programs are in red.

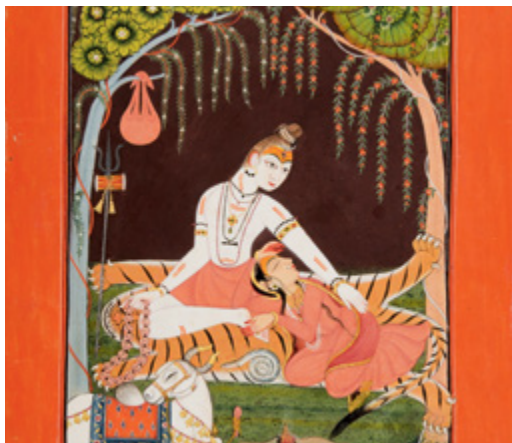
\$ Fee charged (member discounts offered for some events)

M Members' event

R By reservation only

Just for You

For a complete list of upcoming member programs, please visit philamuseum.org/membership or see the fall **What's On** guide.



Members-Only Tours

There's always more to see—let us show you around. With one special theme to focus on, our Museum Guides will give each tour their own spin. Take the tour multiple times to experience the guides' unique perspectives.

This month, enjoy an introduction to the arts and cultures of India, Pakistan, Afghanistan, and Tibet, on a **South Asian Art** tour. And delve deeper into **Fabulous Fashion** with an exhibition tour.

These tours are free for members and start in Lenfest Hall (West Entrance). See left for dates and times. Space is limited, and reservations are required. **R M**

Looking for More Tours?

Up to six guided tours are offered every day, with no reservations required. Members-only tours are highlighted in this calendar. To see the entire schedule of tour topics and times, check the calendar page on our website on the first of each month.



Members' Events

Space is limited; reservations are required.

Fall into Art Party Hosted by the Young Friends

Saturday, November 3, 9:00 p.m.—midnight

It's getting haute at the Museum. Don't miss our biggest party of the year, where you'll catwalk into the galleries for late-night access, dance to the sounds of DJ Royale in the Great Stair Hall, and show us your best art-chic look inspired by the drama and glamour of **Fabulous Fashion**.

And did we mention the open bar? Tickets start at \$45. For more details and for tickets, visit philamuseum.org/yfevent. **\$ R**

Presenting **Fabulous Fashion**

Thursday, November 15, 11:00 a.m.

Join Kristina Haugland (The Le Vine Associate Curator of Costume and Textiles) and Bernice Morris (Associate Conservator of Costume and Textiles) as they share the creative challenges behind presenting such a special exhibition. For Sustainer members and above (\$500+). **R M**

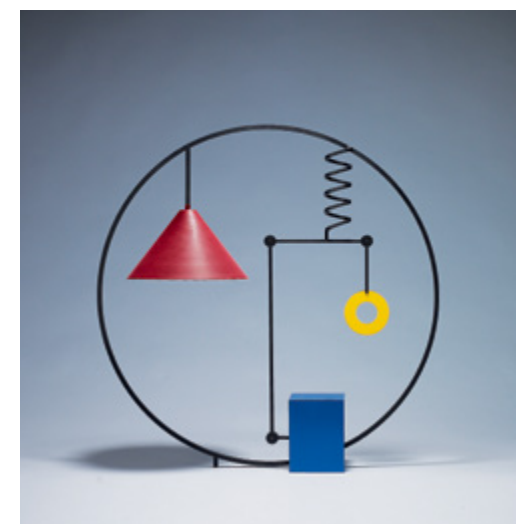
42nd Annual

Philadelphia Museum of Art Craft Show

Pennsylvania Convention Center, November 2–4

Preview Party November 1, 4:00–9:00 p.m.

A premier showcase of contemporary craft and design. Selected from more than 875 applicants, this year's craft show will feature the work of 195 of the finest and most dynamic craft artists in the United States, plus 26 guest artists from Germany. Museum members get a discount on adult tickets purchased in advance—save \$4 on one-day admission or \$5 on two-day admission. To learn more, visit pmacraftshow.org or call 215-235-7469.



Gift Memberships

Give a Year of Art

Through December 31

As a member, you know how wonderful it is to be a part of the Museum family. Surprise someone on your list with a full year of art and experiences. And when you give a gift membership, you're also supporting our work to bring the arts to life and inspire visitors of all ages.

And just for you: save 10% on gift memberships with promo code **MGIFTCAL**.



November Dining Perk

Receive a free pastry with the purchase of a coffee in the Café.

Cover: Ceramic artwork by 2018 Philadelphia Museum of Art Craft Show artist Ahronng Kim.

This page: **The 1920's . . . The Migrants Arrive and Cast Their Ballots**, (detail), 1974, by Jacob Lawrence (Gift of Lorillard, 1976-38-8) © The Jacob and Gwendolyn Lawrence Foundation, Seattle/Artists Rights Society (ARS). **"Mercury" Evening Dress** (detail), fall/winter 1994–95, designed by Geoffrey Beene. Worn by Deanna McBrearty. Photograph © Christin Losta. **The Immortal Marriage** (detail), around 1700–1725, India (Stella Kramrisch Collection, 1994-148-509). Lamp by 2018 Philadelphia Museum of Art Craft Show artist Kibaek Sung. **"Antibodi" Chaise** (detail), designed 2006 by Patricia Urquiola, made by Moroso S.p.A. (Gift of Fury Design, Inc., Philadelphia, 2008-57-1).

On the reverse: **"Miss French Mary" Fashion Doll** 1875, France (Gift of Mrs. James Wilson Wister, née Elizabeth Bayard Dunn, 1970-215-1a-zz). **Evening Dress and Overdress**, spring 1951, designed by Cristóbal Balenciaga (Philadelphia Museum of Art: Gift of John Wanamaker, Philadelphia, 1951-73-1a-d).



Follow us and join the conversation.

@philamuseum

Philadelphia
Museum of
Art

PO Box 7646
Philadelphia, PA 19101-7646

November 2018

Dated material. Please do not delay.

Members get discounted tickets for the
Philadelphia Museum of Art Craft Show.